



Austin > News > Science & Space

LIVESTRONG Patient Navigation Center has grand opening in East Austin

March 27th, 2011 6:26 pm CT



Pat Dames
Austin Health News Examiner

[Subscribe](#) [Sponsor an Examiner](#)

< View all of Pat's articles

[Email](#) [Print](#)



LIVESTRONG - an Austin center for cancer support
Photo: bING iMAGES

Slideshow: Grand Opening of LIVESTRONG Patient Navigation Center



Popular articles

1. La Vernia community saddened by sudden death of school assistant vice principal
2. Weather Forecast For Houston TX And Vicinity, Thursday, March 31, 2011

Do you like this Article?

Like

You like **LIVESTRONG Patient Navigation Center has grand opening**

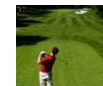
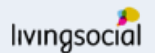
On Friday, hundreds gathered in East Austin for the grand opening of the **LIVESTRONG** Patient Navigation Center. The parking lot was filled with child-friendly activities, a large covered stage, free food and drink stations and the sounds of laughter and excitement. Inside, attendees toured the facility, spoke with staff and volunteers, enjoyed ice cream and nachos and visited with representatives of affiliated organizations that are partnering with LIVESTRONG to support those affected by cancer.

The center provides free, one-on-one support to anyone dealing with cancer, including loved ones and care providers. It is actually a prototype which will serve as a model for providing cancer support services to individuals in underserved communities nationwide. The organization has been providing support to cancer patients for years via the phone or internet and will now be able to do this face-to-face for the Austin community. Meeting areas are family-friendly and include tiny chairs and tables as well as toys.

Lance Armstrong was present and told the crowd that 600,000 will die from cancer this year and that 200,000 of those are unnecessary deaths. He quoted Harold Freeman, a LIVESTRONG board member and founder of the [Ralph](#)

WRITE FOR US! >

Offer of the day



Nine Holes of Golf, Cart Rental, and Range Balls

Now that Governor Perry has agreed to use a little moolah...

[More info](#) | \$12.00 | 50% off

Other featured offers near you

Radon Testing & Mitigation

Radon Service Estimates, Customer Reviews, Profile Info & More!

[More Info](#) | (866) 673-3862 | [Visit Website](#)

Call (800) 316-7859 to See Your Business Here! Get a 20% Discount If You Call Today. [Click Here to Learn More.](#)

Austin Events

THU	FRI	SAT	SUN	MON	TUE	WED
31	01	02	03	04	05	06

Today's events

West Side Story: National Tour

University of Texas at Austin – Performing Arts Center

Fiction

Zachary Scott Theatre Center

Texas Legends at Austin Toros

Cedar Park Center

[View more events in Austin >](#)

3. Dutch police looking for the father of 12-year-old girl's baby
4. Russian breeder offers petite lap giraffes on new website (VIDEO)
5. Summer Inman Update: Police say her body was found in a church septic system
6. Summer Inman: Strangled and put in church septic system (video)

Pat Dames's recent articles

- TDI program aims to help Texans with pre-existing health conditions
- Research studies confirm even a little yoga can remedy many health challenges
- Soft drinks cause greater risks to health than previously suspected
- Touch For Health training to be held in Austin on January 29-30
- Holistic living fair now a monthly event in Round Rock
- Austin offers a plethora of non-traditional approaches to health and well-being

[Lauren Cancer Center](#) in Harlem who said that those deaths are the difference in **what we know and what we do**.

Having worked in the cancer field and having struggled with stretching limited dollars to try and meet the needs of the underserved, I found that statement to be quite powerful.

Lance said, "*Morally and ethically, we are failing*" and shared that he had just spent the last two days in DC discussing cancer funding, an effort that hopefully, will make a difference.

Doug Ulman, LIVESTRONG president and CEO and three-time cancer survivor, kicked off the event and spoke about how the center helps anyone affected by cancer in overcoming the tough challenges that arise after a diagnosis and that underserved families are hit especially hard. US Rep. Lloyd Doggett reinforced this by sharing that "*someone with no insurance has a 60% greater chance of dying of cancer*". Texas Rep. Eddie Rodriguez was also present to show his support of the new center as was Texas Senator Kirk Watson.

When someone is diagnosed with breast cancer, it is likely that they will be able to find information and support online and within their community. However, with most other types of cancer, this is not the case. And the more rare the cancer type, the harder it is to find support. This is a gap that the LIVESTRONG Cancer Patient Navigation program aims to fill. In many cases, patient navigators will refer the individual to an existing resource. Below is a list of several of the organizations that were present to share about the types of support they provide:

Advertisement



[Patient Advocate Foundation/PAF](#) – provides assistance with issues related to access to care, medical debt, insurance and job retention for patients with chronic, debilitating or life-threatening illnesses.

[Top This!](#) – a local resource for wigs, hair replacement,

Headlines



Syria's leader delivers speech, blames unrest on "conspirators."
[See more of the speech](#)

More in News

- [Get the latest updates on Japan's tragedy](#)
- [Whooping cough cases on the rise](#)
- [Brazilian police detained in teen shooting](#)
- [Gas prices are on the rise again](#)


Want the latest and greatest from Examiners?
[Subscribe to our newsletters!](#)

Austin business directory

SEARCH


Popular searches: Austin Auto Repair, Austin Food and Dining, Austin Real Estate Sales and Services, Austin Attorneys, Austin Lodging


Recent Activity

 You need to be logged into Facebook to see your friends' activity

No recent activity to display.

 **Another throw away Pit bull – discarded in alligator infested waters of FL**
353 people shared this.

 **Iowa dog rescuer faces animal cruelty charges**
204 people shared this.

 **Five facts revealed by 'Twilight' author Stephenie Meyer - National Twilight**
161 people shared this.


 **Edward's 'The Twilight Saga: Breaking Dawn' Volvo spotted**
162 people shared this.

 **Fantastic Flo Anito Interview**
116 people shared this.

 **Models in the Lingerie Fashion Show**
91 people shared this.

 **The human cost of illegal immigration in painful detail**
86 people shared this.

 **Part 3: Progressives enslave America for its own good, as we cry like babies**
52 people shared this.

 **Will You Ever Truly Know Your Mate?**
91 people shared this.

 Facebook social plugin

[Examiner.com](#) on Facebook

massage and salon services owned and operated by cancer survivors

[Imerman Angels](#) – nationwide organization which connects a person fighting cancer with someone who has had the same type of cancer for one-to-one support

[Breast Cancer Resource Centers of Texas/BCRC](#) – patient navigators provide information, education and a wide variety of support via phone and face-to face throughout the Greater Austin area for those affected by breast cancer

[The Care Communities](#) -- using volunteer teams, provides compassionate support to those in the Austin area who are living with a serious disease such as cancer and HIV/AIDS

[Wonders and Worries](#) – helps children cope when a parent has a chronic or life-threatening illness

[EmergingMed](#) -- LIVESTRONG's cancer clinical trial matching service

Support is available by calling 866.673.7205 or [online](#) for English and 866.927.7205 or [online](#) for Spanish. Those in the Austin area can send an email to cancer.navigation@livestrong.org or call 512-220-7777 to schedule an appointment.

In the words of Lance Armstrong, “*we’re not just a building here, we’re your partners*”.



More news & info from your area

Battle Bend	Pflugerville
Bryker Woods	Round Rock
Clarksville	San Marcos
Downtown	Tarrytown
East Austin	Travis Heights

[View more Austin neighborhoods »](#)