



SAFEGUARDING YOUR SENSITIVE
SAP DATA FROM LOSS AND THEFT,
NO MATTER WHERE IT RESIDES OR
HOW IT IS USED

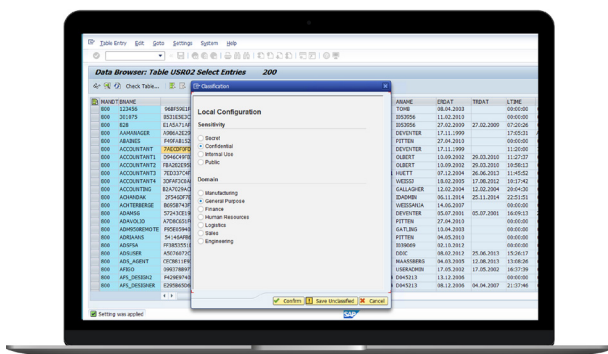
ABOUT SECUDE
ADVANCED SAP SECURITY SOLUTIONS

HALOCORE

SAP® Certified
Powered by SAP NetWeaver®

ADVANCED SAP SECURITY SOLUTIONS

Founded in 1996 by SAP and Fraunhofer, the largest application-oriented research organization in Europe, SECUDE is a leading global IT provider of security solutions. SECUDE combines the knowledge of enterprise IT infrastructures, particularly SAP environments, with deep security expertise. SECUDE helps customers protect sensitive data from loss or theft and meet legal and industry requirements and guidelines. With SECUDE's solutions, enterprises that run SAP are able to identify sensitive data with intelligent classification and secure information with strong encryption and fine-grained permission policies, allowing it to be safely accessed, stored, and shared inside the enterprise and across cloud and mobile platforms.



AUDITING

Monitor, record, and classify all activity surrounding your business-critical data as it is exported from SAP. **Halocore's** enhanced logging and auditing features give you critical visibility into sensitive data distribution, allowing internal and external audit teams to identify risky areas, users, or transactions. All extraction activity is aggregated in a fully customizable audit log, which visualizes data downloads based on user, file type, file size, transaction, application, path, terminal, IP address, and classification label. The audit log is a powerful tool that can help you prevent sensitive data loss and lower compliance costs.

CLASSIFICATION

Identify the value of business information right at the moment of its creation in SAP with **Halocore**, the first data classification solution designed specifically for SAP customers. **Halocore** maximizes SAP users' return on investment in data governance solutions by seamlessly fitting into the existing data classification framework. **Halocore** enables users to conveniently tag information at the point of download from SAP, allowing documents to be classified according to the sensitivity and criticality to the organization. This allows companies to have better control and make intelligent decisions over sensitive data handling.



SECUDE PROVIDES AN INTEGRATED PORTFOLIO OF DATA SECURITY SOLUTIONS FOR SAP

Transform Your Approach to SAP Security with **Halocore**. **Halocore** provides SAP users with the unique ability to identify sensitive data with context-aware classification, track and analyze all download activity from SAP applications, and prevent potential data loss.

DATA LOSS PREVENTION

With data leaving the enterprise in enormous volumes and rates, Data Loss Prevention (DLP) for SAP is a key security issue. **Halocore's** DLP technology for SAP helps prevent loss of your most sensitive data. **Halocore** is directly integrated with SAP, preventing certain sensitive data downloads from happening even before they arrive at the user's chosen medium. **Halocore** monitors data extracted from SAP and blocks downloads that would violate internal data security policies. All download behavior is logged for further auditing, and with **Halocore's** GRC Extension, appropriate personnel can be alerted of blocked downloads to investigate and take further action.

GOVERNANCE, RISK AND COMPLIANCE

Halocore's GRC Extension tightly integrates with existing SAP Access Control workflows with the goal of reducing risk and ensuring compliance with information protection policies. **Halocore** logs attributes pertaining to all data extraction activity from SAP. The attributes for each log entry capture detailed information about the data being downloaded from SAP. **Halocore's** GRC uses the comprehensive logging mechanism to provide the enhanced functionality for SAP Access Controls in two key areas: Emergency Access Management and Alert Triggering.

DATA PROTECTION

Prevent unauthorized access to intellectual property and other sensitive information by protecting data at its core with **Halocore**. **Halocore** allows granular permissions to sensitive data by classifying and applying strong encryption and usage rights to any document extracted from SAP. Document owners are enabled to maintain control over the lifetime of a document, even if it has been shared or downloaded to a recipient's PC, mobile device, or even the cloud. **Halocore** enables businesses that run SAP to remain safe and compliant, while minimizing the risk of data loss and allowing secure information sharing with minimal work interruptions.





SWITZERLAND

SECUDE International AG
Werftstrasse 4A
6005 Luzern

Tel: +41 61 366 30 00
Fax: +41 61 366 30 26

GERMANY

SECUDE GmbH
Rheinstrasse 97
64295 Darmstadt

Tel : +49 6151 828 97 0
Fax : +49 6151 828 97 26

USA

SECUDE IT Security, LLC
3331 Sundew Ct
Alpharetta, GA 30005

Tel: +1 (770) 360-5530
Fax: +1 (678) 264-1538

INDIA

SECUDE Solutions India
Private Limited
No. T2/6, Dr. V S I Estate
Thiruvanmiyur
Chennai - 600 041

Tel: +91 44 4297 5600
Fax: +91 44 4297 5606

ABOUT SECUDE

SECUDE is an innovative global provider of IT data protection solutions for SAP customers. The company was founded in 1996 as a partnership between SAP AG and Europe's largest application-oriented research organization, Fraunhofer institute in Germany. SECUDE helps customers protect sensitive data from loss or theft and to meet legal and industry requirements and guidelines. Since 2011, SECUDE has been part of the SAP® PartnerEdge™ Value Added Reseller program and an SAP distribution partner in Germany and Switzerland. SECUDE's solutions enable enterprises that run on SAP to identify sensitive data exports from SAP applications with intelligent classification and secure information with strong encryption and fine-grained permission policies, allowing it to be safely accessed, stored, and shared inside the enterprise and across cloud and mobile platforms. Today, SECUDE is trusted by a large number of Fortune 500 companies, including many DAX companies. With offices in Europe, North America and Asia, SECUDE embraces global IT security.