



PaintShopTM Pro x4

Reviewer's Guide

PaintShop™ Pro x4

	Contents
	1 Introducing Corel PaintShop Pro X4 1
	2 What’s included?3
	3 Key features4
	4 Favorite features.....9

1



Introducing Corel® PaintShop™ Pro X4

For people who have a passion for photography, Corel® PaintShop™ Pro X4 is a no-compromise solution for managing, adjusting, editing, and sharing photos. Offering DSLR power at a point-and-shoot price, it provides an end-to-end photo-editing workflow for both the aspiring and expert photographer.

PaintShop Pro X4 has a range of powerful new tools, features, effects, and under-the-hood enhancements based on feedback from our community of passionate users and the latest advancements in digital photography.

The development of this version focused on delivering more of the kind of high-level editing power that longtime PaintShop Pro enthusiasts have come to expect, increasing application speed and performance, optimizing usability for a more intuitive workflow, and simplifying photo sharing.

Whether you're exploring the creative possibilities of your DSLR camera or quickly fixing and sharing images from your mobile phone or pocket camera, PaintShop Pro X4 helps you maximize the creative potential of your photos.

Professional editing power

Photo enthusiasts are often faced with a tough choice. They can either settle for the limited toolset of a "lite edition" or pay a hefty price for full-featured software. PaintShop Pro X4 offers an affordable solution that doesn't cut corners. With redesigned HDR photo-merging features, a variety of new effects and filters, and 16-bit support for dozens of tools, PaintShop Pro X4 ensures that digital photographers are never held

back by stripped-down software so they can fully explore their creativity.

Performance

An unwavering commitment to improving every aspect of application performance drove the creation of PaintShop Pro X4, and it shows. A range of upgrades, such as GPU optimizations and a smaller footprint size, deliver a faster, more stable photo-editing experience. In fact, you'll notice the performance upgrades in PaintShop Pro X4 immediately — a faster installation means you can get right to work.

Usability

Knowing that you want to spend more time creating and less time sorting and managing photos, PaintShop Pro X4 provides a wide variety of interface improvements to enhance and streamline your digital photography workflow. A totally redesigned workspace delivers a more intuitive approach to image-editing, and new full-screen preview and dual-monitor support help you get most out of your pictures.

Sharing

After you've fine-tuned your photos, PaintShop Pro X4 makes it easy to show them off. From uploading to Flickr, posting to Facebook, or emailing images directly from the application, you can give your work the audience it deserves.

Customer profiles

Photo enthusiasts: A photo enthusiast is anyone who has embraced photography as a passion. Working primarily with a DSLR, they want to get the most out of their camera's capabilities, such as shooting in a RAW format or using auto-bracketing features. Thanks to the wide array of high-quality camera equipment available today, photo enthusiasts can generate professional-looking results, even if they're just starting out. They seek software that gives them hands-on, deep-editing features along with one-click fixes for the most common problems. Their output may be to Flickr® or Facebook®, a photo frame, or even a traditional print.

Graphic designers: Many graphic designers use PaintShop Pro as their primary medium. They're more likely to create a graphic from scratch than to base an artwork around a photo. Their work is often used by enterprises to improve their web presence or by social media users as avatars. For some, the digital art they create using PaintShop Pro is a passionate creative outlet, and for others it's a source of income.

Digital scrapbookers: As technology has made it easier to research, gather and share information, there's been an explosion in hobbyists who document their family and personal history in digital scrapbooks. Working with images from a variety of sources, digital scrapbookers need tools to adjust recent shots they've taken as well as features to restore and improve older family pictures they've scanned. And, when they've finished their project, they seek flexible ways to share it.

Business users: Workers in a wide range of fields use graphics in their day-to-day work. They work with content from a variety of sources — colleagues, clients, legacy files, even screen captures — so the ability to open and save to a wide variety of file formats is critical. The images they create are often incorporated into business presentations, marketing materials, or websites. Working in busy environments with little time to spare for training, they seek intuitive tools and quick photo fixes to help maximize productivity.



2



What's included?

Main application

- **Corel® PaintShop™ Pro X4:** Corel PaintShop Pro X4 gives passionate photographers more to love with hundreds of photo-editing features, a streamlined workspace, new pro-level effects, and one-click sharing. Totally revamped HDR tools help you create the perfectly exposed image or achieve a surreal, artistic effect. With the new Photo Blend feature, you can remove distractions and combine the best elements from a series of shots. The new Selective Focus feature lets you mimic expensive tilt-shift lenses to turn a scene into a miniature world. Managing and editing all your photos is easier with redesigned workspaces and dual monitor support. And thanks to dozens of enhancements, application performance is dramatically faster.

Minimum system requirements

- Microsoft® Windows® 7, Windows Vista® or Windows® XP, with latest service packs installed (32-bit or 64-bit editions)
- 1.5 GHz processor (2 GHz or faster recommended)
- 1 GB RAM (2 GB RAM or higher recommended)
- 1 GB free hard drive space (2 GB or greater recommended)
- 1024 x 768 resolution, 16-bit color display
- Windows-compatible CD-ROM drive for installation
- Internet connection required to post photos online and download program updates

Format support

- **Input:** AI, BMP, CAL, CALS, CGM, CLP, CMX, CT, CUR, CUT, DCX, DIB, DRW, EMF, EPS, FPX, GIF, HDP, HGL, HPG, IFF, IMG, J2C, J2K, JIF, JP2, JPC, JPE, JPEG, JPG, JPS, JPX, MAC, MPO, MRW, MSP, PBM, PCD, PCT, PCX, PDF, PGL, PGM, PIC, PICT, PNG, PNS, PPM, PS, PSD, PSP (PSP image files), RAS, RAW, RIF, RLE, SCT, SVG, SVGZ, TGA, TIF, UFO, WBM, WBMP, WDP, WEBP, WMF, WPG
RAW file support from over 300 camera models including 3FR, ARW, CR2, CRW, DCR, DNG, ERF, K25, KDC, MEF, MOS, NEF, NRW, ORF, PEF, RAF, RW2, SR2, SRF, X3F
Video input format support for MPEG1, WMV (Windows Media Video), MOV (QuickTime® required) and AVI (motion JPEG)
- **Output:** BMP, CAL, CALS, CLP, CUT, DCX, DIB, EMF, EPS, AI, PS, FPX, GIF, HDP, WDP, IFF, IMG, JP2, J2C, J2K, JPC, JPX, JPG, JIF, JPE, JPEG, MAC, MSP, PBM, PCX, PGM, PIC, PPM, PNG, PSD, PSP (PSP IMAGE FILES), RAS, RAW, RIF, RIFF, RLE, SCT, CT, JPS, PNS, TGA, TIF, TIFF, WBMP, WBM, WEBP, WMF

3



Corel® PaintShop™ Pro X4 key features

PaintShop Pro has long been known for giving users the ability to get the most out of their images. With a redesigned user interface, PaintShop Pro X4 offers a fast, stable and powerful photo-editing experience carefully tailored for the workflow of today's photo enthusiast.

Professional editing power

New! HDR tools: A totally new set of HDR tools in PaintShop Pro X4 is designed to let you take full advantage of photos taken with auto-bracketing features on DSLRs.

You can use Exposure Merge to combine photos taken with different exposure settings to create perfectly exposed images. Ideal for high-contrast backlit scenes, such as sunsets and interior

window shots, Exposure Merge lets you bring out color and detail in the foreground, midground, and background areas. PaintShop Pro X4 has built-in HDR-adjustment presets, or you can save and reuse your favorite configurations as a preset.

For photographers who use auto-bracketing often, Batch Merge is a time-saving tool for quickly processing HDR sets. It lets you merge multiple bracketed sets of photos at the same time to achieve a custom, uniform look across a series of HDR photos. Batch Merge lets you save your results to a 32-bit HDR file so you can refine it later. In some cases, this might be all you need to get the look you were hoping for. In other cases, you'll want to adjust the results in Exposure Merge.



You can merge photos taken with different exposures to create a perfectly exposed image.

Give it a try

To merge exposures

- 1 Open the files **HDR_merge01.CR2**, **HDR_merge02.CR2**, and **HDR_merge03.CR2** in the Sample folder on the Press Materials CD.
- 2 In the Organizer palette, select the thumbnails of the sample photos.
- 3 Click **File ▶ HDR ▶ Exposure Merge**.
- 4 First, you'll combine the exposures. Choose **Auto Select** from the **Camera response curve profile** drop-list.
- 5 In the Alignment area, choose **Edge-based** from the **Method** drop-list, and click **Align**.
- 6 Click **Process**.
- 7 The next stage is adjusting the color and tone of the HDR image you just created. In the Presets area, click a preset thumbnail.
- 8 Set the white balance by clicking the **Dropper** tool and clicking the image to set your white point.
- 9 You can warm or cool the image by dragging the **Temperature** slider, adjust the overall tone and contrast by dragging the **Contrast**, **Highlights**, **Midtones**, and **Shadows** sliders, or tweak color saturation with the **Vibrancy** slider.
- 10 Click **Process**.
- 11 The last stage is fine-tuning your image. In the Fine-Tune window, apply any of the tools or adjustment options to adjust the final image, and click **Save and Close**.

New! Photo Blend: Getting a group shot where everyone looks their best just got a lot easier with Photo Blend. This new feature lets you combine the best features from a series of photos to create a perfect image. For example, you can swap out a blinking photo subject from one picture for a better shot of that person. And if the only thing that stands between a good photo and a perfect one is an unwanted element, Photo Blend makes it easy to remove unwanted portions of images. You can even get creative by showing the same person multiple times in a single photo.



The Photo Blend feature lets you combine the best parts of several photos to create one flawless image.

Give it a try

To merge photo content

- 1 Open the files **GroupPhotoFix1.jpg** and **GroupPhotoFix2.jpg** in the Sample folder on the Press Materials CD.
- 2 Click **File ▶ Photo Blend**.
- 3 In the Alignment area, click **Align**.
- 4 Click a thumbnail in the tray to display it in the preview window.
- 5 Click **Brush in**, and drag over the areas you want to preserve.
- 6 Click **Brush out**, and drag over the areas you want to remove.
- 7 Select the 2nd thumbnail, and repeat steps 5 and 6.
- 8 To fine-tune your image, in the Fine-Tune window, apply any of the tools or adjustment options to adjust the final image, and click **Save and close**.

New! Fill Light and Clarity filter: Using this one powerful filter, you can fine-tune the brightness and clarity of your photos. The Fill Light/Clarity filter simplifies brightening shadows or darkening light areas without affecting other portions of the image. You can also soften or sharpen subtle yet important details in shots.



The Fill Light/Clarity filter lets you brighten shadowy image areas without changing the rest of the photo.

Give it a try

To adjust brightness and clarity

- 1 Open the file **Fill_Light_hat_before.jpg** in the Sample folder on the Press Materials CD.
- 2 In the Edit workspace, click **Adjust ▶ Brightness and Contrast ▶ Fill Light/Clarity**.
- 3 Type or set a value in the **Fill Light** control.
A positive number lightens the darkest areas of the photo; a negative number darkens the light areas of the photo. A value of zero preserves the original setting.
- 4 Type or set a value in the **Clarity** control.
A positive number increases detail; a negative number decreases detail and focus. A value of zero preserves the original setting.
- 5 Click **OK**.

New! Selective Focus: This new effect lets you transform a real shot into a miniature model. Selective Focus, often referred to as a tilt-shift effect, lets you intuitively adjust the depth of field and increase saturation to create the illusion of a toy-like miniature scene from a photo. You can also use Selective Focus to draw attention to important parts of an image by blurring out busy surrounding details.



Selective Focus lets you transform a scene into a miniature world.

Give it a try

To apply a miniature effect

- 1 Open the file **Selective_Focus_before.jpg** in the Sample folder on the Press Materials CD.
- 2 In the Edit workspace, click **Effects ▶ Photo Effects ▶ Selective Focus** to display the Selective Focus dialog box.
- 3 Choose the **Planar Selection** tool, and drag in the Before pane to set an area of focus.
You can position the area of focus by dragging it in the Before pane when your pointer displays the move cursor. You can also size and rotate the area of focus using the handles on its borders and corners.
- 4 Fine-tune the results by dragging any of the following sliders:
 - **Blur amount** to determine the amount of blur outside the area of focus
 - **Feather edge** to determine the softness of the transition between the area in focus and the blurred areas
 - **Saturation** to determine the intensity of the colors in the photo
- 5 Click **OK**.

New! Vignette: PaintShop Pro X4 makes this classic photo effect easier than ever to create, tweak, and apply. The new Vignette feature adds a soft outer border that fades to white or black so you can draw attention to the most important part of your shot. Easy-to-use controls let you fine-tune the shape of the edges and the amount of blur, glow, and feathering. In addition, an instant preview lets you quickly see how the effect looks.



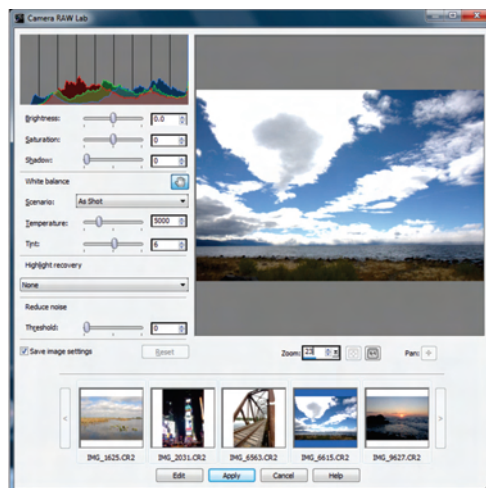
The Vignette effect is ideal for drawing attention to an area of an image.

Give it a try

To apply a vignette effect

- 1 Open the file **Vignette_before.jpg** in the Sample folder on the Press Materials CD.
- 2 In the Edit workspace, click **Effects ▶ Photo Effects ▶ Vignette** to display the Vignette dialog box.
- 3 Choose a selection tool and drag in the Before pane to set the edge for the effect.
- 4 Drag the **Dark/Light** slider to set an edge color.
- 5 Fine-tune the results by dragging any of the following sliders:
 - **Blur** to determine the amount of blur outside the area of focus
 - **Diffuse glow** to add a luminescent brightening effect and soften details in the entire photo
 - **Feather edge** to determine the softness of the transition between the area in focus and the edge effect
- 6 Click **OK**.

Enhanced! Camera RAW Lab: The Camera RAW Lab is now easier to use with a larger preview area and an improved histogram that help you quickly assess your adjustments. In addition, new highlight recovery options mean that you can restore detail in overexposed areas.



Enhancements to the Camera RAW Lab make working with RAW files easier than ever.

Enhanced! 16-bit support: PaintShop Pro X4 has extended 16-bit support to a range of tools and adjustments, giving you even more precision and flexibility when working with RAW formats.

Over 20 tools have been upgraded to 16-bit support, including the Scratch Remover, Paint Brush, Object Remover, Color Replacer, Warp Brush, Mesh Warp, and Background Eraser.

Performance

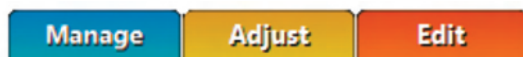
Enhanced! Application speed: PaintShop Pro X4 has more than 75 performance updates, including GPU optimizations, that help ensure a fast, efficient working environment. Effects, such as Noise Reduction, Vibrancy and Tone Mapping, can now be applied in real time. Skin Smoothing, Smart Carver™, Depth of Field, Blur, and Smart Photo Fix have also been refined to offer enhanced speed and performance. In addition, Camera RAW decoding is faster than ever.

Enhanced! Full-screen review: The Quick Review feature has been tweaked to offer full-screen image review so you can quickly and easily view, delete, rotate, and rate your photos.

Usability

New! MUI support: Great if you're working on a multilingual dual-byte system, new native multilingual user interface (MUI) support means that you can display text from multiple interface languages on a single PC. Now, there's never a problem working with photos that have foreign characters in their filename.

Enhanced! Workspace: PaintShop Pro X4 has been redesigned so you can move between photo workflows in a click. The application has three tabbed workspaces each dedicated to a different stage in the digital-photography workflow. The Manage workspace gives you everything you need to review and organize your photos. You can find the most frequently used image-correction tools in the Adjust workspace, and the Edit workspace provides you with a full range of professional-level editing tools. No matter which workspace you're in, the Organizer palette is always displayed, so there's no need to go to a separate workspace or application to find more photos.

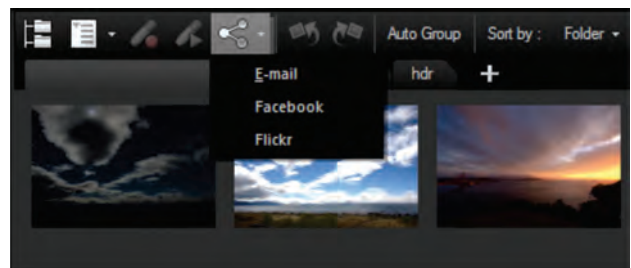


An intuitive tabbed workspace accelerates your photo editing.

New! Dual monitor support: Because you can never have enough screen space, PaintShop Pro X4 lets you manage your photos on one monitor and edit on another.

Sharing

Enhanced! Built-in sharing: Uploading your photos to Flickr or Facebook is even easier in PaintShop Pro X4 with new one-click sharing directly from the Organizer.



You can share your photos directly from the Organizer.

4



Corel® PaintShop™ Pro X4 favorite features

Here are some of the tools and features that have made PaintShop Pro a hit with photo enthusiasts.

Support for over 50 file formats: PaintShop Pro is renowned for the number of file formats an image can be saved to. The Save As command helps you quickly choose the formats you use most often by listing common and recently used ones at the top of the file format list.

Auto-Preserve Originals: You don't have to worry about overwriting your original photos, thanks to the Auto-Preserve Originals option. The first time an image is saved, a backup copy of the original is automatically created one level deeper in the folder hierarchy. The original can easily be restored by using the Restore Original command in the Edit menu.

Crop to New Image: If you scan multiple images at the same time, you can rely on the Crop to New Image feature. It automatically creates a new file from the cropped area and keeps the original full scan open, so individual image files can be easily separated from the group scan.



Crop to New Image

Learning Center palette: The Learning Center was designed to ensure that anyone can harness the power of advanced photo editing, regardless of their previous software experience. It builds your confidence by helping you complete tasks within seconds of launching PaintShop Pro X4.

Makeover Tool: PaintShop Pro X4 has a suite of Makeover tool modes for quickly and easily touching up the appearance of photo subjects. The professional-strength Makeover tool contains the following modes:

- **Suntan Mode** — adds color to pale, washed-out skin. Upgrades in PaintShop Pro X4 allow you to use the Suntan mode of the Makeover tool on 16-bit images.
- **Thinify™ Mode** — makes photo subjects look thinner
- **Eye Drop Mode** — takes the red out of irritated, bloodshot eyes
- **Blemish Fixer Mode** — removes blemishes from photo subjects
- **Toothbrush Mode** — quickly whitens discolored teeth

One Step Photo Fix and Smart Photo Fix: The One Step Photo Fix command automatically applies six common photo corrections to an image. All you do is select the command.

The Smart Photo Fix analyzes a photo and suggests settings for auto-corrections of color, brightness, sharpness, and saturation used in One Step Photo Fix. Completely flexible, you can apply the suggested settings or experiment further by manually fine-tuning the settings. At any point, if you decide that you prefer the results of the

initially suggested fix, you can quickly reapply the suggested settings.

Smart Carver™: The Smart Carver lets you seamlessly and realistically remove objects from a photo and alter the aspect ratio without distorting the rest of the image.



Smart Carver Tool

Red Eye Removal Tool: One of the most common problems in flash photos is red-eye, but PaintShop Pro X4 offers an easy solution. You can quickly remove red-eye from photo subjects with a click of the Red Eye tool.

Color Changer Tool: The Color Changer tool lets you quickly change colors in digital images. For example, the color of an object in a photo, such as a car or a piece of clothing, be easily be changed. Rather than simply replacing a color, the Color Changer tool detects and analyzes variations in brightness caused by shading and texture, and then it makes the necessary adjustments to the new color to produce a realistic recoloring effect.



Color Changer Tool

Noise Removal: “Noise” artifacts — small specks of color that interfere with the clarity of the image — are one of the most common problems in digital photography. PaintShop Pro X4 offers two noise-removal options: The One Step Noise Removal for one-step, automatic noise removal, and the Digital Camera Noise Removal

command for precisely controlling how these same corrections are applied.

Perspective Correction Tool: This longtime favorite gives you the power and versatility of an expensive tilt-correction lens. With the Perspective Correction tool, buildings, landmarks, or objects in photos that appear in the wrong perspective or that were taken from an angle other than directly in front can be corrected. You simply line up the four corner points with a shape that should be rectangular to adjust the entire image.



Perspective Correction Tool

Scratch Remover Tool: The Scratch Remover tool instantly removes scratches, power lines, telephone poles, and other linear flaws or distractions in photos. This tool, upgraded with 16-bit support, is particularly useful for removing scratches or cracks when restoring old photos.

Black and White Film effect: You can easily create dynamic black-and-white photos by simulating the effects of shooting using black-and-white film with colored filters. PaintShop Pro X4 gives you full creative control of the Channel Mixer command by letting you select from a virtually infinite range of color combinations within an intuitive, easy-to-use interface. The Black and White Film dialog box also provides a Clarify control, which allows for the creation of dynamic, high-contrast images that mimic the use of black-and-white film with a color filter on the lens.

Adjustment Layers: Whenever a tonal or color change is applied to a photo, the image’s information is altered, which means that the image ultimately starts to degrade. The advantage of using adjustment layers is that they do not permanently modify the image layers themselves. In addition, multiple adjustment layers can be added to an image to test various

color corrections or to see how several corrections look when they're combined.

Depth of Field effect: The Depth of Field effect draws attention to specific image areas by subtly blurring the rest of the photo. This replicates the look of limited depth of field, an effect that usually requires precise manual lens aperture adjustments. You can also draw attention to several areas of an image in ways that aren't possible in conventional photography. For example, you can keep objects in both the foreground and background in focus, while blurring the rest of the image.



Depth of Field effect

Curves and Levels adjustments: The Curves and Levels features in PaintShop Pro X4 offers exceptional control over some of the most critical imaging adjustments. The Curves dialog box includes a histogram, so you can easily and intuitively fine-tune your work. Three automatic settings let less-experienced users optimize the contrast and color levels in their images with a few clicks.

Lens distortion correction filters: PaintShop Pro X4 provides excellent Lens Distortion Correction filters that correct common photo distortions, such as fish-eye, barrel, and pincushion.



Lens Distortion Correction

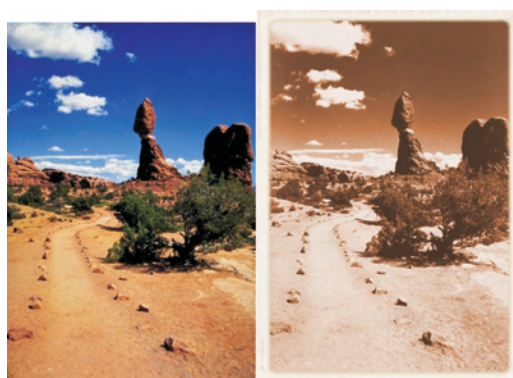
High Pass filter: The High Pass Filter turns fuzzy, out-of-focus photos into crisp images without compressing or degrading the quality of the image.

Visible Watermark: This feature simplifies the task of adding a logo or other graphic as a watermark to remind viewers who took the shot and to help safeguard against misuse of images.

Picture Tubes™: This longtime user favorite is even better in PaintShop Pro X4 with 16-bit support. It lets you paint on photos with a collection of professionally designed artistic elements. Picture Tubes™ are available in a variety of themes, and you can also create your own graphics to use with the Picture Tube tool.

Picture Frames and Photo Edges: Using picture frames and photo edges, you can easily add eye-catching final touches to images. PaintShop Pro X4 provides a variety of picture frame styles, and the frames are editable, so you can tweak them or create your own.

Time Machine: The Time Machine offers a tour of photographic history by previewing what a photo would look like if it had been taken in another era. With a range of settings based on photo styles from the 1830s to the 1980s, you can easily send photos back in time. A live preview shows the evolution of photography on a single image.



Time Machine

About Corel Corporation

Corel is one of the world's top software companies, with more than 100 million active users in over 75 countries. We develop software that helps people express their ideas and share their stories in more exciting, creative, and persuasive ways. Through the years, we've built a reputation for delivering innovative, trusted products that are easy to learn and use, helping people achieve new levels of productivity. The industry has responded with hundreds of awards for software innovation, design, and value.

Our award-winning product portfolio includes some of the world's most widely recognized and popular software brands, including CorelDRAW® Graphics Suite, Corel® Painter™, Corel DESIGNER® Technical Suite, Corel® PaintShop Photo® Pro, Corel® VideoStudio®, Corel® WinDVD®, Corel® WordPerfect® Office, WinZip®, and Corel® Digital Studio™. Our global headquarters are in Ottawa, Canada, and major offices are in the United States, the United Kingdom, Germany, China, Taiwan, and Japan.

Copyright 2011 Corel Corporation. All rights reserved.

Corel® PaintShop™ Pro X4 Reviewer's Guide

Product specifications, pricing, packaging, technical support and information ("specifications") refer to the retail English version only. The specifications for all other versions (including other language versions) may vary.

INFORMATION IS PROVIDED BY COREL ON AN "AS IS" BASIS, WITHOUT ANY OTHER WARRANTIES OR CONDITIONS, EXPRESS OR IMPLIED, INCLUDING, BUT NOT LIMITED TO, WARRANTIES OF MERCHANTABILITY, SATISFACTORY QUALITY, MERCHANTABILITY OR FITNESS FOR A PARTICULAR PURPOSE, OR THOSE ARISING BY LAW, STATUTE, USAGE OF TRADE, COURSE OF DEALING OR OTHERWISE. THE ENTIRE RISK AS TO THE RESULTS OF THE INFORMATION PROVIDED OR ITS USE IS ASSUMED BY YOU. COREL SHALL HAVE NO LIABILITY TO YOU OR ANY OTHER PERSON OR ENTITY FOR ANY INDIRECT, INCIDENTAL, SPECIAL, OR CONSEQUENTIAL DAMAGES WHATSOEVER, INCLUDING, BUT NOT LIMITED TO, LOSS OF REVENUE OR PROFIT, LOST OR DAMAGED DATA OR OTHER COMMERCIAL OR ECONOMIC LOSS, EVEN IF COREL HAS BEEN ADVISED OF THE POSSIBILITY OF SUCH DAMAGES, OR THEY ARE FORESEEABLE. COREL IS ALSO NOT LIABLE FOR ANY CLAIMS MADE BY ANY THIRD PARTY. COREL'S MAXIMUM AGGREGATE LIABILITY TO YOU SHALL NOT EXCEED THE COSTS PAID BY YOU TO PURCHASE THE MATERIALS. SOME STATES/COUNTRIES DO NOT ALLOW EXCLUSIONS OR LIMITATIONS OF LIABILITY FOR CONSEQUENTIAL OR INCIDENTAL DAMAGES, SO THE ABOVE LIMITATIONS MAY NOT APPLY TO YOU.

Corel, PaintShop, the Corel Balloon logo, the Corel logo, CorelDRAW, Corel DESIGNER, Digital Studio, Painter, Picture Tubes, Quattro Pro, Smart Carver, Thinify, VideoStudio, WinDVD, WinZip, and WordPerfect are trademarks or registered trademarks of Corel Corporation and/or its subsidiaries in Canada, the U.S. and/or other countries.

Protected by Patents in the United States and elsewhere.

All trademarks or registered trademarks are the property of their respective owners.

PaintShopTM Pro X4

Media Contacts

Germany, Austria, Switzerland & Poland:

Tim Schade

Senior PR Manager, EMEA

tim.schade@corel.com

+44 1628 589849

UK, Benelux, Nordics & South Africa:

Chris Boba

EMEA PR Manager

chris.boba@corel.com

+44 1628 589845

France, Italy, Spain, Portugal & rest of EMEA:

Maria Di Martino

EMEA PR Manager

maria.dimartino@corel.com

+44 1628 589848

Asia Pacific:

Joy Tsai

APAC PR Manager

joy.tsai@corel.com

Tel: +886-2-26273777 ext. 6319



Corel Corporation
1600 Carling Ave.
Ottawa, ON
Canada K1Z 8R7

Corel UK Limited
Sapphire Court
Bell Street
Maidenhead
Berkshire SL6 1BU
United Kingdom

Corel TW Corp.
7F No. 399, Rueiguang Rd,
Neihu District, Taipei City
114, Taiwan