

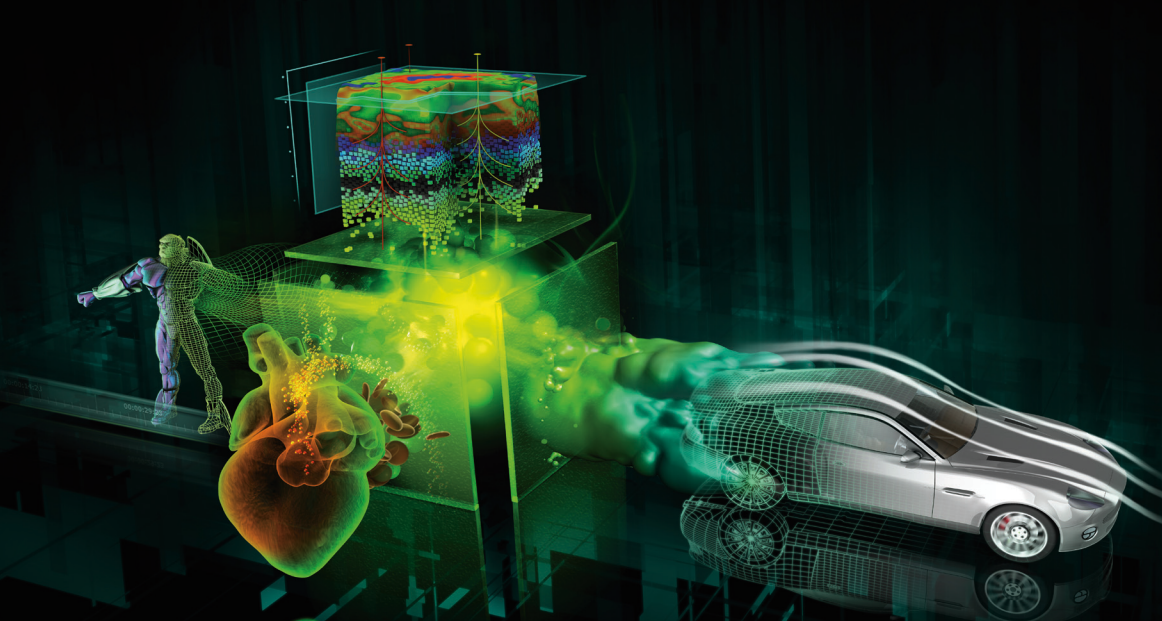
NVIDIA® QUADRO® PROFESSIONAL GRAPHICS SOLUTIONS

			Display					Performance				Features					Multi-GPU Features			Options		
Model			Dual-Link DVI	Display Port	Maximum Display Resolution Digital @ 60Hz	FSAA (maximum)	NVIDIA® Mosaic ¹⁰ Technology	NVIDIA® CUDA™ Processing Cores	Graphics Memory	Memory Bandwidth	Relative Performance Score ¹	OpenGL	DirectX	Shader Model	Error Correcting Code Memory	High Performance Double Precision	NVIDIA® Multi-OS Support	NVIDIA® SLI® Frame Rendering Support	NVIDIA® SLI® FSAA Support	HD SDI Capture/Output	G-Sync	
Quadro Plex	VISUAL COMPUTING SYSTEM	Quadro Plex 7000 New!	4	-	2560x1600	128x	✓	896	12 GB	144 GBps	N/A	4.1	11	5.0	✓	✓		✓	✓	6	✓	
		Quadro Plex 2200 D2	4	2	2560x1600	64x	✓	480	8 GB	102 GBps	N/A	3.3	10.1	4.0				✓	✓		6	✓
Quadro	ULTRA-HIGH END	Quadro 6000 New!	1	2	2560 x 1600	64x	✓	448	6 GB ⁹	144 GBps	46.9	4.1	11	5.0	✓	✓	✓	✓	✓	✓	✓	✓
		Quadro FX 5800	2	1	2560 x 1600	32x	✓	240	4 GB	102 GBps	25.7	3.3	10.1	4.0			✓	✓	✓	✓	✓	✓
	HIGH-END	Quadro 5000 New!	1	2	2560 x 1600	64x	✓	352	2.5 GB	120 GBps	40.9	4.1	11	5.0	✓	✓	✓	✓	✓	✓	✓	✓
		Quadro 4000 New!	1	2	2560 x 1600	64x	✓	256	2 GB	89.6 GBps	35.3	4.1	11	5.0		✓	✓			✓		
		Quadro 4000 for Mac New!	1	1	2560 x 1600	64x ¹¹		256	2 GB	89.6 GBps	N/A	4.1 ⁵	11	5.0		✓					✓	
		Quadro FX 4800	1	2	2560 x 1600	32x	✓	192	1.5 GB	76.8 GBps	24.6	3.3	10.1	4.0			✓	✓	✓	✓	✓	✓
		Quadro FX 4800 for Mac	2	-	2560 x 1600	32x ¹¹		192	1.5 GB	76.8 GBps	N/A	3.3 ⁴	10.1	4.0								
		Quadro FX 3800	1	2	2560 x 1600	32x	✓	192	1 GB	51.2 GBps	23.5	3.3	10.1	4.0			✓				✓	
	MID-RANGE	Quadro 2000 New!	1	2	2560 x 1600	32x	✓	192	1 GB	41.6 GBps	27.68	4.1	11	5.0			✓					
		Quadro FX 1800	1	2	2560 x 1600	32x	✓	64	768 MB	38.4 GBps	18.7	3.3	10.1	4.0			✓					
	ENTRY-LEVEL	Quadro 600 New!	1	1	2560 x 1600	64x	✓	96	1 GB	25.6 GBps	17.9	4.1	11	5.0								
		Quadro FX 580	1	2	2560 x 1600	16x	✓	16	512 MB	25.6 GBps	15.9	3.3	10.1	4.0								
		Quadro FX 380	2	-	2560 x 1600	16x	✓	16	256 MB	22.4 GBps	9.7	3.3	10.1	4.0								
		Quadro FX 380 LP	1	1	2560 x 1600	16x	✓	16	512 MB	12.8 GBps	9.5	3.3	10.1	4.1								
	MOBILE	Quadro 5000M New!	2	2	2	64x	✓	320	2 GB	76.8 GBps		4.1	11	5.0	✓	✓						
		Quadro FX 3800M	2	2	2	32x	✓	128	1 GB	64 GBps		3.3	10	4.0								
		Quadro FX 3700M	2	2	2	32x	✓	128	1 GB	51.2 GBps		3.3	10	4.0								
		Quadro FX 2800M	2	2	2	32x	✓	96	1 GB	64 GBps		3.3	10	4.0								
		Quadro FX 2700M	2	2	2	32x	✓	48	512 MB	51.2 GBps		3.3	10	4.0								
		Quadro FX 1800M	2	2	2	16x	✓	72	1 GB	35.2 GBps		3.3	10.1	4.0								
Quadro FX 1700M		2	2	2	16x	✓	32	512 MB	25.6 GBps		3.3	10	4.0									
Quadro FX 880M		2	2	2	16x	✓	48	1 GB	25.6 GBps		3.3	10.1	4.0									
Quadro FX 770M		2	2	2	16x	✓	32	512 MB	25.6 GBps		3.3	10	4.0									
Quadro FX 380M		2	2	2	16x	✓	16	512 MB	12.8 GBps		3.3	10.1	4.0									
Quadro FX 370M		2	2	2	8x	✓	8	256 MB	9.6 GBps		3.3	10	4.0									
Quadro NVS	QUAD DISPLAY	Quadro NVS 450	-	4	2560 x 1600	-	✓	16	512 MB	11.2 GBps ³		3.3	10.1	4.0								
		Quadro NVS 420 x16 or x1	-	8	2560 x 1600	-	✓	16	512 MB	11.2 GBps ³		3.3	10.1	4.0								
	DUAL DISPLAY	Quadro NVS 295 x16 or x1	-	2	2560x1600	-	✓	8	256 MB	11.2 GBps		3.3	10.1	4.0								
		Quadro NVS 290 x16 or x1	7	-	1920x1200	-	✓	16	256 MB	6.4 GBps		3.3	10.1	4.0								
MOBILE	For more information on NVIDIA NVS Mobile solutions please visit http://www.nvidia.com/object/quadro_nvs_notebook.html																					

1. Relative performance score represents the geometric mean of the Viewperf 11 viewsets and is intended to provide a relative performance difference. Additional scaling may vary. SPECviewperf@ 11 for more information visit www.spec.org.
 2. Mobile workstation performance and display support will vary by OEM; please see www.spec.org or OEM specifications for details.
 3. Per GPU memory bandwidth.
 4. Open GL 3.1 on Mac OSX, OpenGL 3.3 on Windows using Bootcamp.
 5. Open GL 3.1 on Mac OSX, OpenGL 4.1 on Windows using Bootcamp.

6. Capture compatible only.
 7. Supports SL-DVI/VGA through DM559 connector.
 8. Supports DP/SL-DVI through VH DCI connector.
 9. 6 GB is supported on Win7 and Linux64 (4GB memory limit on Windows XP64) via Rel 256 driver.
 10. Mosaic Technology will be available with upcoming driver release in Winter 2010.
 11. 8x on Mac OSX.





EXPONENTIALLY BETTER NVIDIA® QUADRO® PROFESSIONAL GRAPHICS SOLUTIONS

NVIDIA® Quadro® solutions integrate high-performance computing with advanced visualization for the world's fastest application performance across a broad range of engineering, design and video applications.

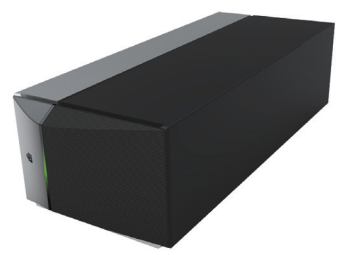
THE NEWEST NVIDIA QUADRO PROFESSIONAL GRAPHICS SOLUTIONS

Based on the innovative Fermi architecture with massive parallel processing capabilities, the newest Quadro solutions deliver up to 5x faster application performance and up to 8x faster computational simulation.



NVIDIA QUADRO PLEX 7000 VISUALIZATION SYSTEM

Seamlessly display up to 36 megapixels across eight displays for installations of high-resolution, multi-display environments.



NVIDIA® 3D VISION™ PRO

Advanced stereoscopic 3D solution provides a fully immersive experience for exploring and investigating complex datasets in multi-user environments.

